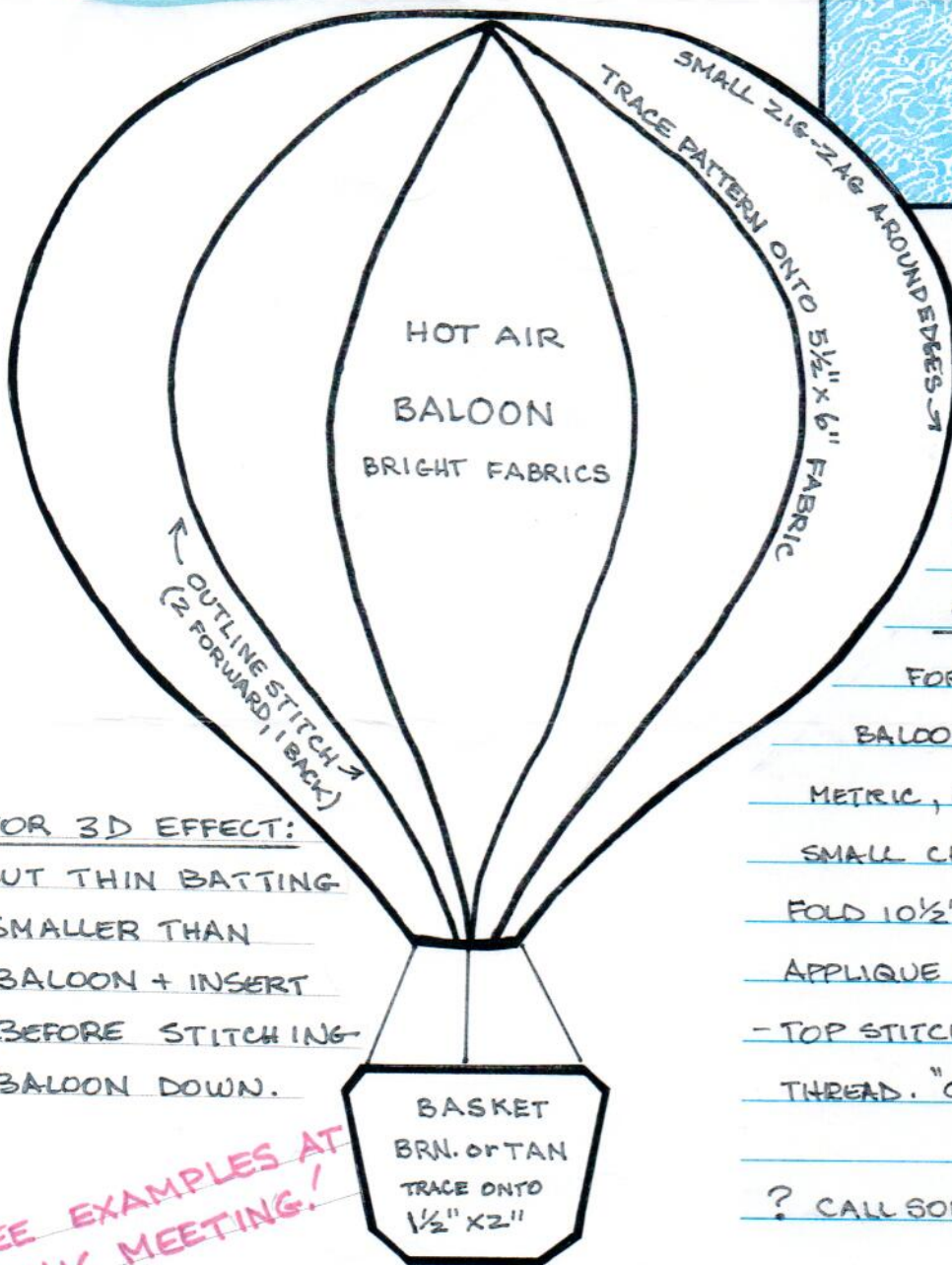
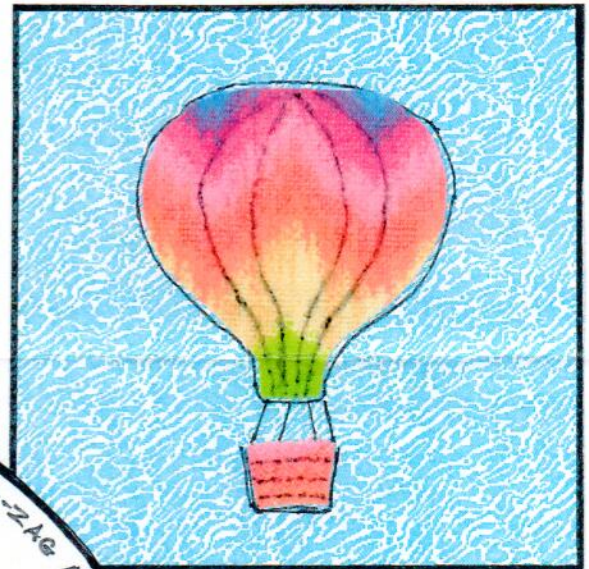


Calico Cutter's BOM for Aug. 2015

Let's go...
Balooning



10 1/2" SQ. UNFINISHED

WHAT'S NEEDED:

10 1/2" SQ. SKY BLUE

5 1/2" x 6" BRIGHT PRINT

1 1/2" x 2" BRN. OR TAN

DIRECTIONS:

FOR BEST RESULTS, CUT

BALOON FROM SWIRLY, GEO-

METRIC, OR HORIZONTAL STRIPES,

SMALL CHECKS FOR BASKET.

FOLD 10 1/2" SQ. IN 1/2 FOR CENTER.

APPLIQUE WITH SMALL ZIG-ZAGS.

- TOP STITCH "LINES" WITH BLACK

THREAD. "OUTLINE STITCH" IS BEST.

? CALL SONIA: 610-269-0934

FOR 3D EFFECT:
- CUT THIN BATTING
SMALLER THAN
BALOON + INSERT
BEFORE STITCHING
BALOON DOWN.

SEE EXAMPLES AT
JULY MEETING!