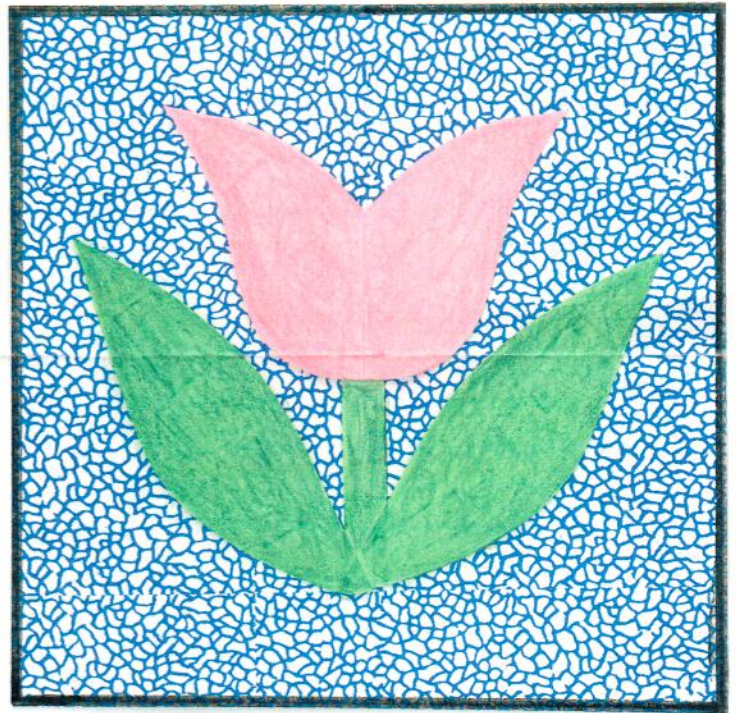


Calico Cutters B.O.M. for May 2017



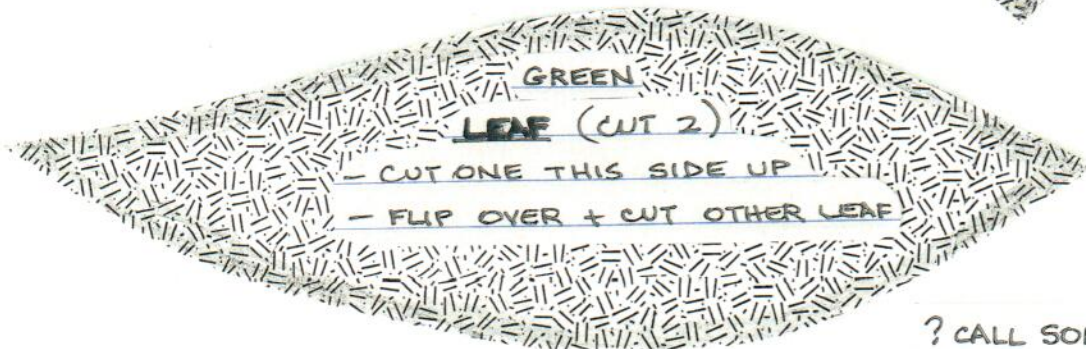
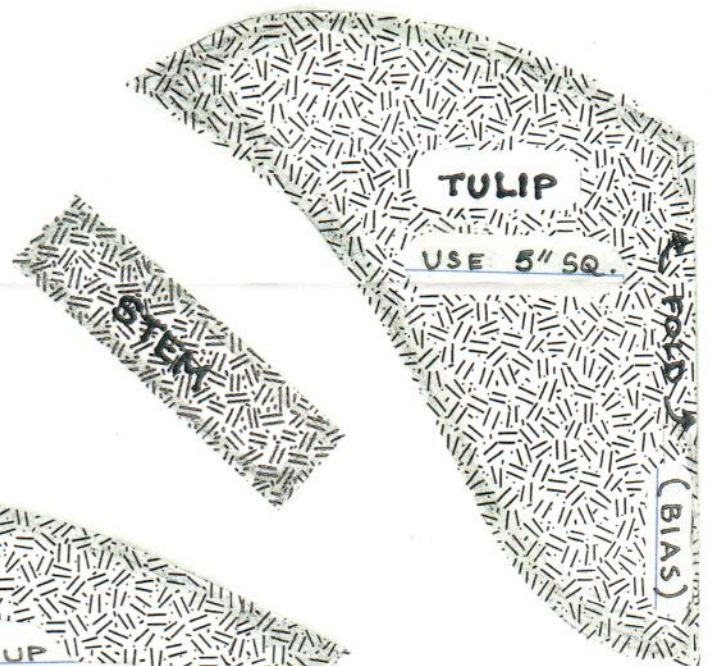
WHAT'S NEEDED:

- 1 9" SQ. BLUE (GET 4 IN 1 FQ)
- 1 5" SQ. TULIP COLOR
- 2 5" SQ. GREEN (LEAVES)
- 1 1/2" x 3" STRIP GREEN (STEM)

9" UNFINISHED

DIRECTIONS:

- FOLD 9" SQ. IN HALF TO MARK CENTER - FINGER PRESS + OPEN.
- LAY TULIP, STEM, + LEAVES DOWN + PIN.
- ZIG-ZAG AROUND EDGES



? CALL SONIA: 610-269-0934